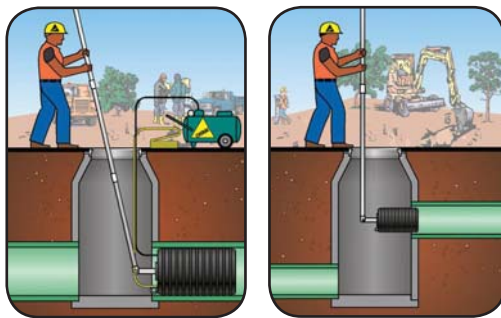


The Remo® Remote Placement plug provides two advantages—it **eliminates** the need to **enter confined spaces** and speeds up the **pipe plugging** process. The system is **safer** and **less expensive** to use than conventional plugging methods because it requires no confined space equipment to simply block sewer flow. A lightweight aluminum pole system* or a standard 1¼" iron pipe** is used to place the Remo® plug in the sewer system.

Remo® Plug Application



Blocking Flow

Blocking Flow - Drop manhole

Remo® Plug Features:

- Multi-size design to seal multiple pipe sizes
- Can be locked at a 90-degree angle to seal openings in drop manholes
- Can be used as a back plug for sewer tests
- Adapters available to convert Muni-Ball® plugs into Remo® plugs

Pole System Features:

- Consists of 6' lightweight aluminum poles with push-button construction
- Designed for plugs up to 30 lbs used in manhole depths of up to 20'
- 1/6th the weight of iron pipe
- Pole system requires Remo® pole adapter

Part #	Nominal Size	Size Usage Range		Maximum Allowable Back Pressure		Product Specifications				Inflation Valve Thread Size	Eye Bolt
		Minimum Diameter	Maximum Diameter	Air Pressure PSI*	Head Pressure (Feet of Head)	Required Inflation Pressure	Product Weight	Deflated			
								Length	Diameter		
Remo® Remote Placement Plugs											
275428	6" - 10" (150 - 250 mm)	5.5" (140 mm)	10.25" (260 mm)	13 (0,9 bar)	30 (9.1 M)	30 (2,1 bar)	8 lbs (3.64 kg)	24" (610 mm)	5.25" (133 mm)	¼" (2)	⅜" (1)
275438	8" - 12" (200 - 300 mm)	7" (178 mm)	12.25" (311 mm)	13 (0,9 bar)	30 (9.1 M)	30 (2,1 bar)	10.75 lbs (4.88 kg)	25.5" (648 mm)	6.75" (171 mm)	¼" (2)	⅜" (1)
275448	12" - 18" (300 - 450 mm)	10.5" (273 mm)	18.25" (464 mm)	13 (0,9 bar)	30 (9.1 M)	30 (2,1 bar)	27 lbs (12.25 kg)	34" (863.5 mm)	10.5" (267 mm)	¼" (2)	⅜" (1)

Remo® Accessories

019473	6' Remo® Pole*						2.3 lbs (1 kg)				
019458	Remo® Pole Adapter (1¼" M NPT)						1 lb (.5 kg)				
019558	1½" Remo® Muni-Ball® Adapter						3.1 lbs (1.4 kg)				
019568	2" Remo® Muni-Ball® Adapter						3.8 lbs (1.75 kg)				
019548	2" - 1½" Remo® Reducer Bushing						.41 lb (.17 kg)				
059688	4" - 2" Remo® Reducer Bushing						2 lbs (.91 kg)				



* Requires pole adapter

** When added strength is needed, iron pipe is recommended

* Always block plugs when conducting air tests!